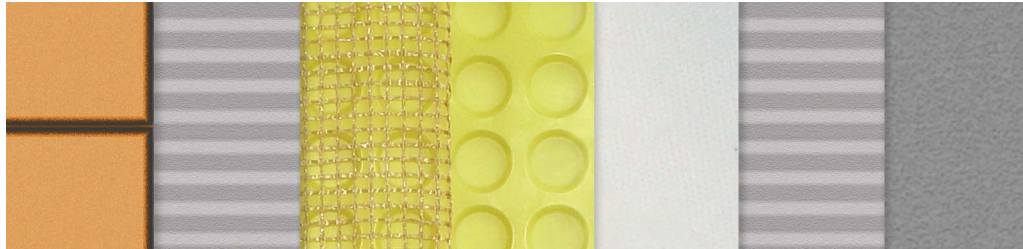
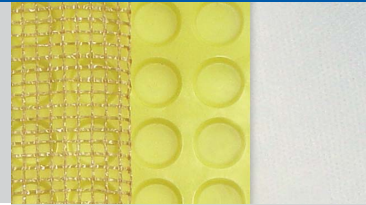


Uncoupling Underlay For Tile Floors:

ISO-DRAIN® 3 GEO MESH



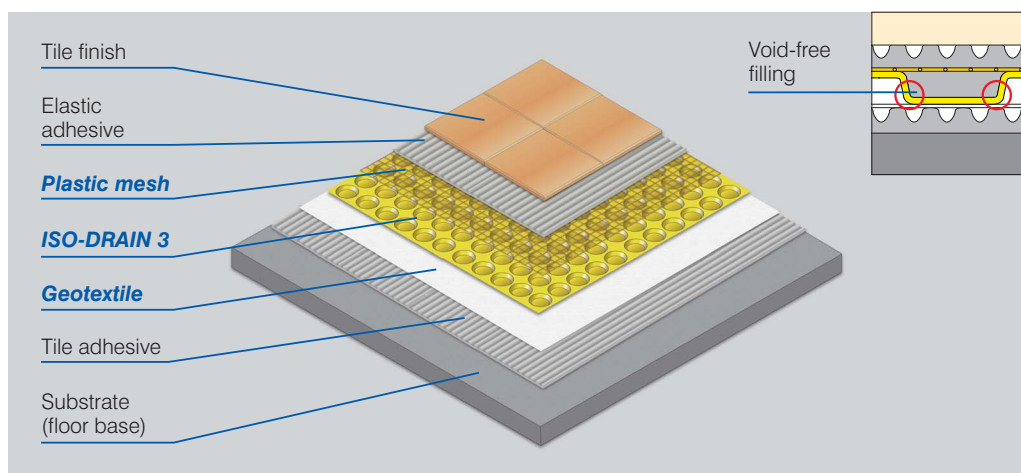
Tile floor finish (indoors or outdoors)	Special elastic adhesive	Plastic mesh for interlocking bond between adhesive cement and dimpled sheet	ISO-DRAIN 3 dimpled sheet	Polypropylene geotextile	Tile adhesive for bond between geotextile and floor base	Floor base
-----------------------------------------	--------------------------	------------------------------------------------------------------------------	---------------------------	--------------------------	----------------------------------------------------------	------------

Benefits:

ISO-DRAIN 3 GEO MESH is a specially designed uncoupling underlay for tile floors laid over base substrates of all kinds. ISO-DRAIN 3 GEO MESH features an integrated plastic mesh which physically locks the adhesive with the dimpled sheet, creating a strong and durable subfloor structure. The new dimple geometry provides significantly increased compressive strength and improved adhesive penetration for fast and easy installation.

Advantages:

- Bridges substrate cracking, prevents crack propagation to the tiles above
- Distributes and reduces localized compressive stress
- Protects the floor finish from moisture migration
- Adhesive penetration in mesh creates solid interlocking bond between tiles and underlay
- Dimple crown design permits fast filling by adhesive with no voids



For joint sealing in installation, we recommend use of ISO-DRAIN 3 SEALING STRIP (120 mm width).

For more information on INTERPLAST products, visit us at www.interplast.de or ask for our comprehensive product handbook with technical information and samples.

INTERPLAST®
Inline Process Technologies

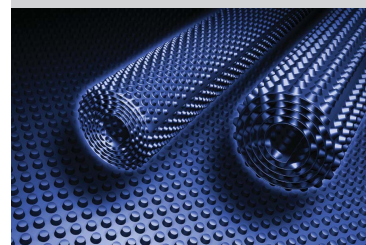
INTERPLAST® Kunststoffe GmbH



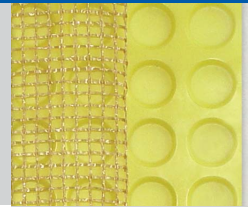
Bühlwiesenweg 1
72221 Haiterbach · Germany

Telephone: +49 - (0) 74 56 - 9 30 08-0
Telefax: +49 - (0) 74 56 - 9 30 08-86

info@interplast.de
www.interplast.de



ISO-DRAIN® 3 GEO MESH



Properties	Values
Material	
• Dimpled sheet	HDPE
• Geotextile	PP
Colour	
• Dimpled sheet	yellow
• Geotextile	white
Thickness (approx.)	
• Dimpled sheet	0.5 mm
• Geotextile area weight	40 g/m ²
Sheet width	2.0 m or 1.0 m
Area weight (approx.)	550 g/m ²
Dimple height	3 mm
Dimple spacing (approx.)	2500 per m ²
Air gap (approx.) between dimples	1.56 l/m ²
Compressive strength (apprx.)	350 kN/m² (35 t/m²)
Tensile strength	610 N / 5 cm
Service temperature range	-40 °C to +80 °C
Physiological properties	non-polluting for drinking water

**Uncoupling
Underlay For
Tile Floors**

INTERPLAST dimpled sheet products are resistant to a wide range of chemicals, impervious to root penetration, rot-proof and unaffected by soil bacteria and fungi.

INTERPLAST premium-quality dimpled sheet products conform to applicable EN and national standards. Installation is recommended using original INTERPLAST accessories only.

INTERPLAST®
Inline Process Technologies

INTERPLAST® Kunststoffe GmbH



Bühlwiesenweg 1
72221 Haiterbach · Germany

Telephone: +49 - (0) 74 56 - 9 30 08-0
Telefax: +49 - (0) 74 56 - 9 30 08-86

info@interplast.de
www.interplast.de

